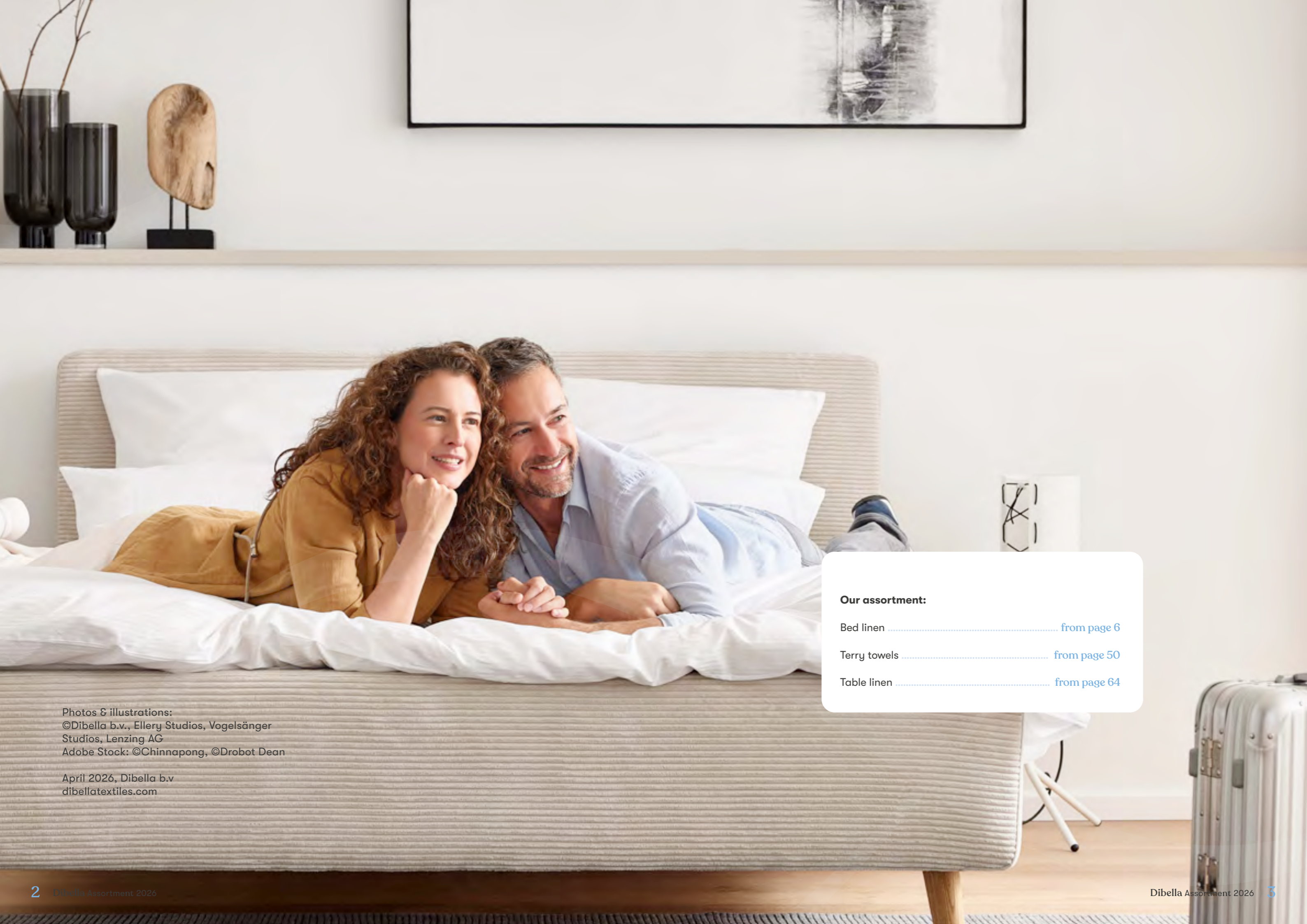


 DIBELLA



Dibella.
2026



Our assortment:

- Bed linen from page 6
- Terry towels from page 50
- Table linen from page 64

Photos & illustrations:
©Dibella b.v., Ellery Studios, Vogelsänger
Studios, Lenzing AG
Adobe Stock: ©Chinnapong, ©Drobot Dean

April 2026, Dibella b.v.
dibellatextiles.com

Durable. Economical. Sustainable.

Find out more: dibellainfo.com/
Click here!

We offer two distinct product lines:

Good Textiles

Ultimate sustainability in our premium collection.

Longlife Textiles

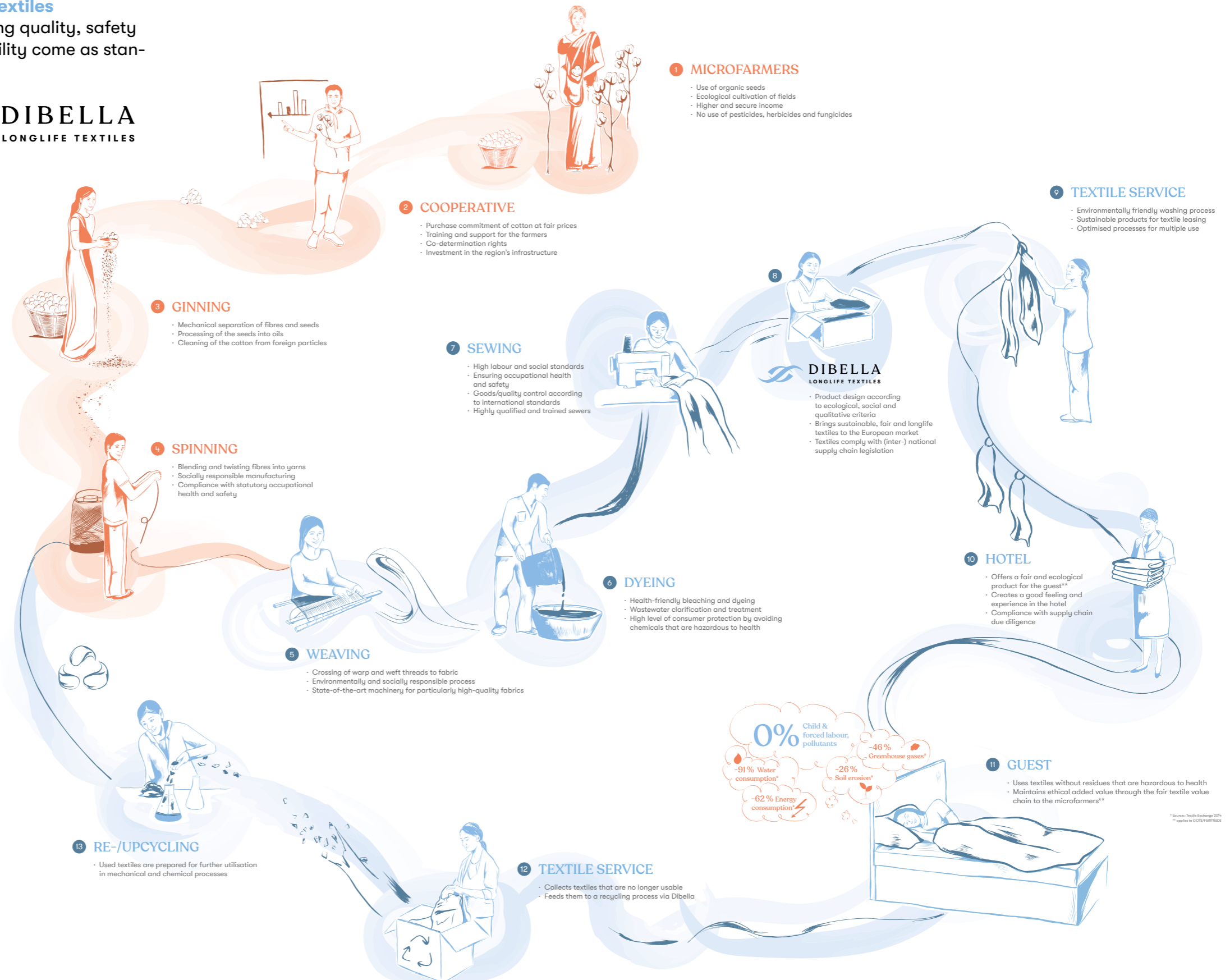
Outstanding quality, safety and durability come as standard.



For our organic Fairtrade goods (which covers the entire supply chain), we source the cotton from the Chetna co-operative in India. This sustainably and fairly grown cotton is processed locally in GOTS-Fairtrade certified companies – this results in the highest possible sustainability standard ever.



OEKO-TEX® MADE IN GREEN guarantees the best social and ecological standards from the weaving mill (shown in blue) and is the cornerstone of the Dibella assortment range. In addition, OEKO-TEX® MADE IN GREEN forms the basis for the GREEN BUTTON state seal.





Bed linen

- Zero Pre-wash** > No separate pre-wash necessary
- Easy Ironing** > Efficient ironing results
- Low Shrinkage Effect** > Reduced shrinkage
- Easy Identification** > Identification by attaching latest chip technology
- Brilliant White** > Stable high whiteness
- Low Pilling** > Outstanding gloss and excellent touch



100 % cotton

plain satin, mercerized
white



Venedig
TC 240, 140 g/m²



Prato TC 300
TC 250, 130 g/m²



Vinovo TC 300
TC 300, 115 g/m²

100 % Organic-Fairtrade cotton

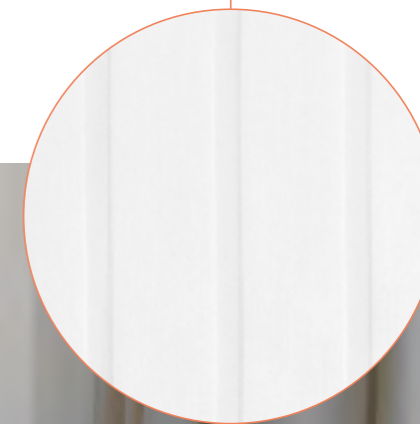
mercerized, white
TC 240, 140 g/m²



Tioba Fair
plain satin



Galifera Fair
6/24-mm-striped satin

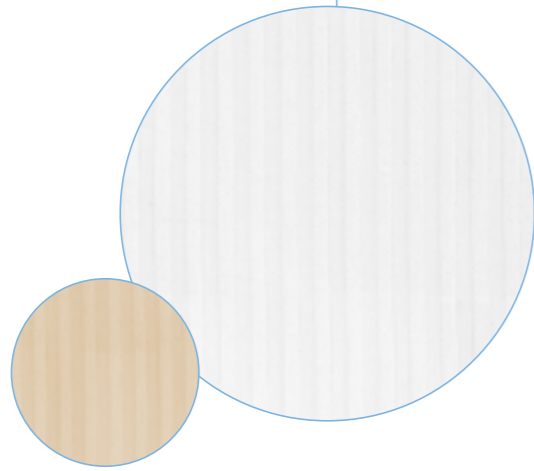


100 % cotton

mercerized

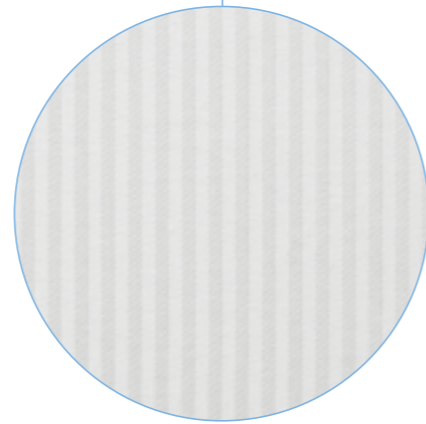
Verona

4-mm-striped satin,
white, champagne,
TC 240, 140 g/m²



Padua

3-mm-striped satin,
white, TC 240, 130 g/m²



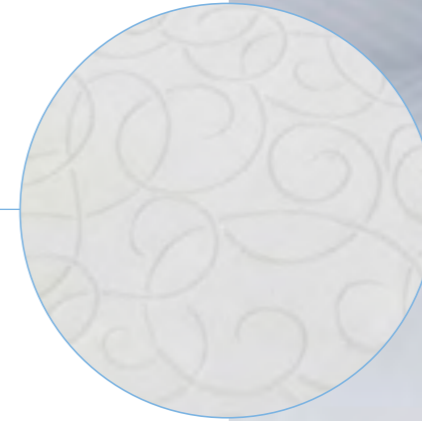
Ancona

Jacquard/floral, satin,
white, TC 300, 140 g/m²



Zermatt

Jacquard/vines, satin,
white, TC 255, 150 g/m²



Turin

2-mm-striped satin,
white, TC 240, 140 g/m²



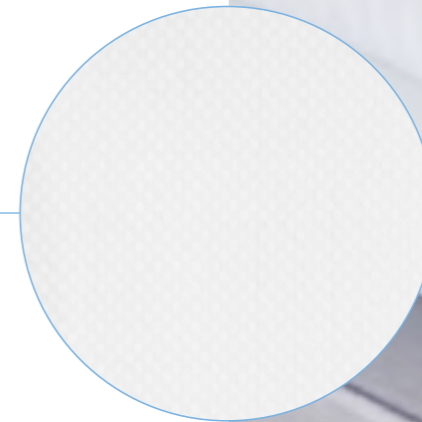
Paris

13-mm-diagonal-
striped satin, white,
TC 260, 145 g/m²



Basel

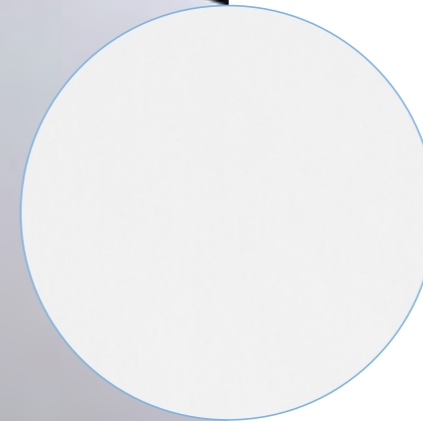
checked satin,
white, 140 g/m², TC 240



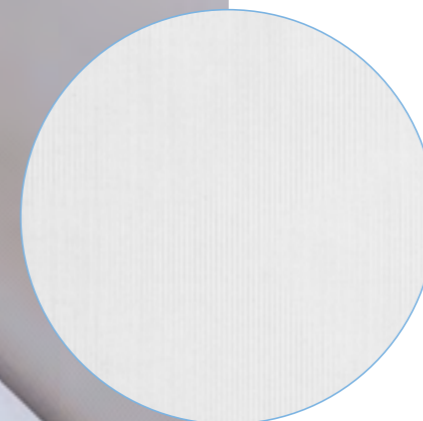


80 % cotton/
20 % polyester

mercerized, white
TC 260, 150 g/m²



Villach
plain satin



Lüneburg
1-mm-striped satin

80 % Organic-Fairtrade-cotton/ 20 % polyester

mercerized, white
TC 240, 140 g/m²



Valletta Fair
plain satin



Memphis Fair
4-mm-striped satin

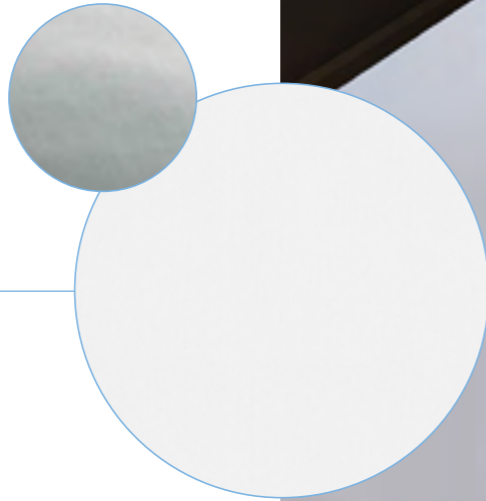


80 % cotton/
20 % polyester

plain satin, mercerized
TC 190, 145 g/m²

Vaduz

white, silver grey

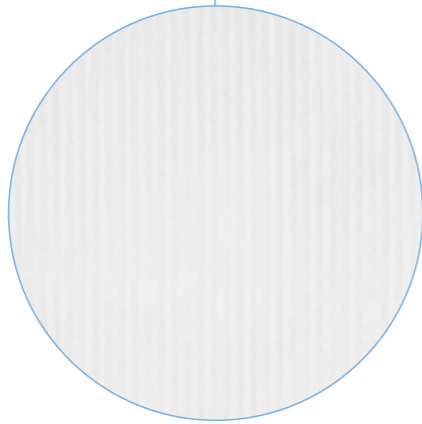


80 % cotton/ 20 % polyester

mercerized, white

Isar

2-mm-striped satin,
TC 260, 150 g/m²



Meran

4-mm-striped satin,
TC 260, 150 g/m²

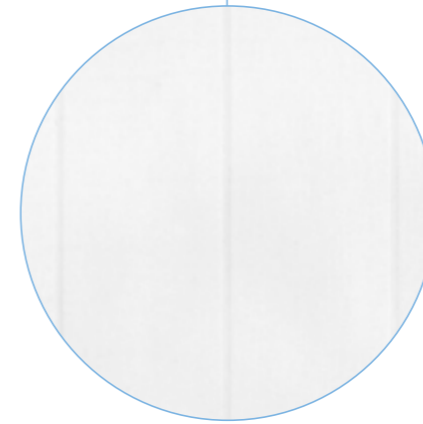


Manchester

4-mm-striped satin,
TC 240, 140 g/m²

Milano

50/2-mm-striped satin,
TC 240, 140 g/m²



Steyr

striped satin,
TC 240, 140 g/m²



Triest

20-mm-
striped satin,
TC 260, 150 g/m²



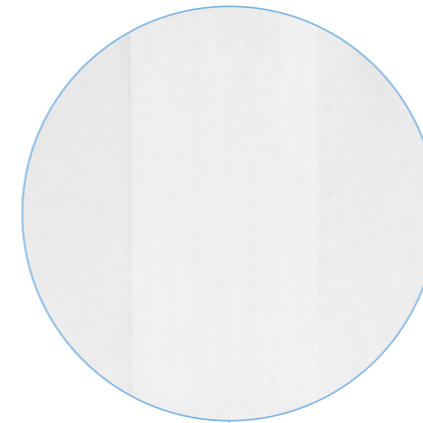
Bremen

8-mm-striped satin,
TC 190, 145 g/m²



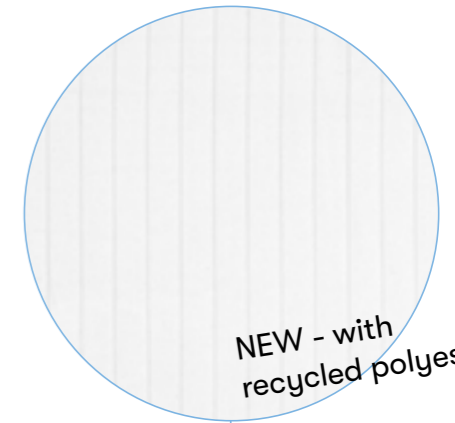
Salzburg

25-mm-striped satin,
TC 190, 145 g/m²



San Remo

50-mm-striped satin,
TC 260, 150 g/m²



Savona RCS

pin striped satin,
TC 260, 150 g/m²

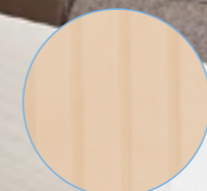
NEW - with
recycled polyester!





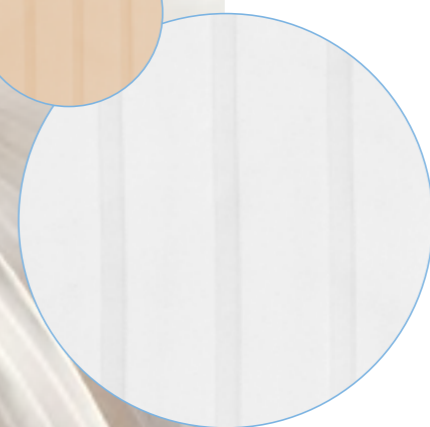
80 % cotton/ 20 % polyester

mercerized,
6/24-mm-striped satin



Graz

white, champagne,
TC 260, 150 g/m²



Innsbruck

white, TC 240, 140 g/m²

80 % cotton/ 20 % polyester

mercerized, white
TC 260, 150 g/m²

Genf
2-mm-checked satin



Spree
8-cm-checked satin



Bed linen with TENCEL™-fibres

60 % TENCEL™ Lyocell, 40 % cotton



mercerized, white
TC 260, 150 g/m²

Virginia
plain satin



Lyocell – also known as **TENCEL™** – is a so-called "man-made cellulose fibre", i.e. a fibre industrially produced from natural raw materials. It is made from wood from forestry and is completely degradable in soil, compost and also in freshwater and seawater.

Botanical origin

TENCEL™ Lyocell and modal fibers come from the renewable raw material wood – from natural forests and sustainably managed plantations. The wood and the pulp used by the Lenzing Group come from certified and controlled sources.

Measurements and hand assessments show that TENCEL™ modal fibers are twice as soft as cotton. The softness of TENCEL™ modal fibers lasts longer and withstands repeated washing and drying compared to cotton.

Sustainable production of TENCEL™ Lyocell fibers

TENCEL™ Lyocell fibers have made a name for themselves because of the environmentally conscious closed-loop manufacturing process that converts pulp into cellulose fibers with high resource efficiency and low environmental impact. This solvent spinning process recycles the process water and returns more than 99% of the solvent to the production cycle.



*This product contains TENCEL™ Lyocell fibres.
TENCEL™ is a trademark of Lenzing AG.*



50 % cotton/ 50 % polyester

mercerized, TC 240, 140 g/m²

Modena
4-mm-striped satin,
white

Monza
20-mm-striped satin,
white

Vinci
1,5-mm-striped satin,
white, cappuccino, grey

Vancouver
plain satin, white

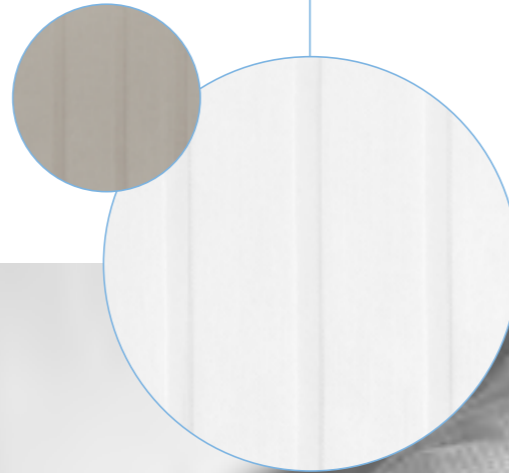


50 % cotton/ 50 % polyester

mercerized

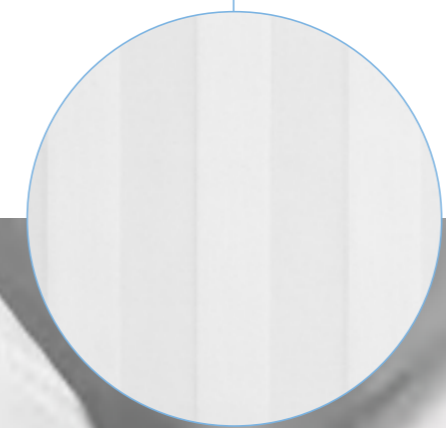
Grado

6/24-mm-striped satin,
white, grey,
TC 240, 140 g/m²



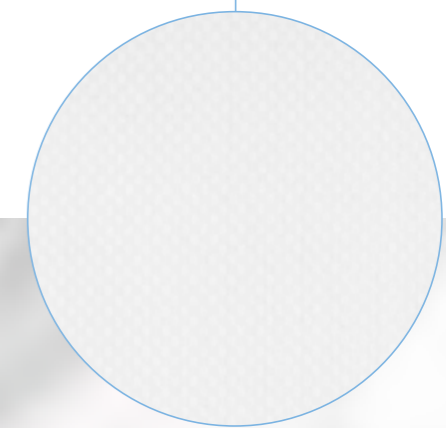
Lindau light

27-mm-striped satin,
white, TC 190, 145 g/m²



Göteborg

checked satin, white,
TC 260, 140 g/m²



As individual as you want it!

We'd be happy to discuss bespoke product options with you.



Bed linen & terry

- Your special design, delivered — along with fresh ideas
- Whether decorative stitching, standing hems or woven-in logos
- Once produced, your items are available from stock at short notice.



Bed sheets

white

G 11 / TB 26
100 % cotton
contamination free
142 g/m²

ALM
80 % cotton, 20 % polyester
150 g/m²

RLM 2
80 % cotton, 20 % polyester
with coloured tracer thread,
150 g/m²

TB 200
50 % cotton, 50 % polyester
140 g/m²

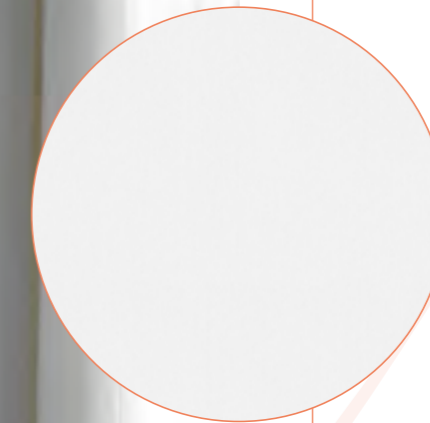
Bed sheets



white,
142 g/m²



Nairobi Fair
100 % Bio-Fairtrade-cotton

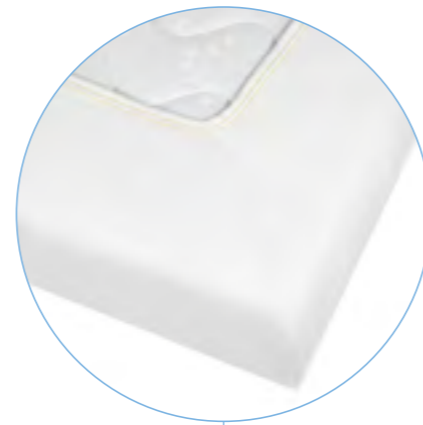


Tunis Fair
80 % Bio-Fairtrade-cotton
20 % polyester

Fitted sheets

Porto

50 % cotton, 50 % polyester
double-jersey, with elastic,
white, yellow or blue
hemmed, 195 g/m²



Lissabon

**50 % cotton,
50 % polyester**
single-jersey, with elastic fine ribbing,
white, yellow hemmed, 190 g/m²

Atlanta

50 % cotton, 50 % polyester
single-jersey, with elastic,,
white, orange or violet hemmed, 155 g/m²



Lagos/Lagos Plus

70 % cotton, 30 % polyester
plated, with elastic,
white, colour hemmed, 155 g/m²



Lagos is
available with
web height
25 cm and
35 cm!





Yarn dyed bed linen

Malmö

**50 % cotton,
50 % polyester**

bicolour

cushion: white/grau, cover:
blue/grey, yellow/grey,
130 g/m²

Rhein

**85 % cotton,
15 % polyester**

bicolour, blue-green striped,
155 g/m²

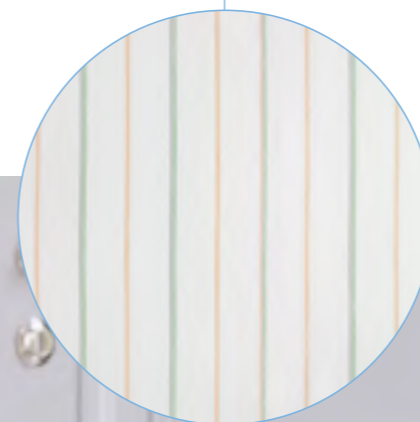
Printed bed linen

80% cotton, 20% polyester
145 g/m²

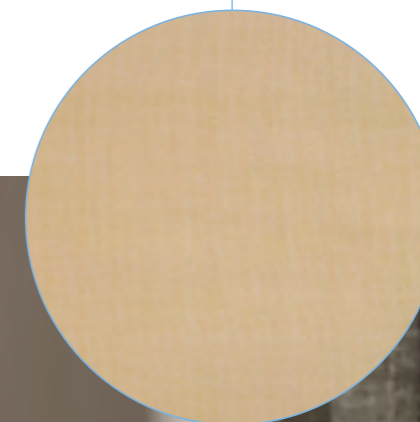
Ravenna
flower



Rivoli
striped



Rovigo
orange





Treviso

60% cotton, 40% polyester
135 g/m²



floral



grey

Precisely tailored to your needs with individual design options!

- We supply your custom design – or fresh new ideas
- Our in-house production can realise a wide range of closure types
- UHF chips available directly from the factory
- We're happy to provide you with image and promotional material





Terry towels

- | | |
|----------------------------|---|
| Low Dust | > Low fibre and weight loss |
| Pre-tumbled | > Fluffy and high loop strength |
| Easy Identification | > Labelled using the latest chip technology |
| Brilliant White | > Stable high whiteness |
| Double Stitch | > Double-stitched hems and seams |

Terry towels

100% Bio-Fairtrade-cotton
single-ply terry, white



Risos Fair
plain, without border,
550 g/m²



Sasso Fair
striped border,
470 g/m²



Terry towels

100 % cotton
single-ply terry, white



Sydney
1 cam stripe,
400 g/m²



Oxford
2 cam stripes,
450 g/m²



Boston
3 cam stripes,
500 g/m²

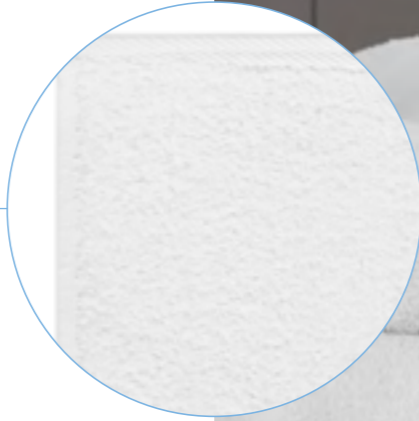
Terry towels

single-ply terry, white



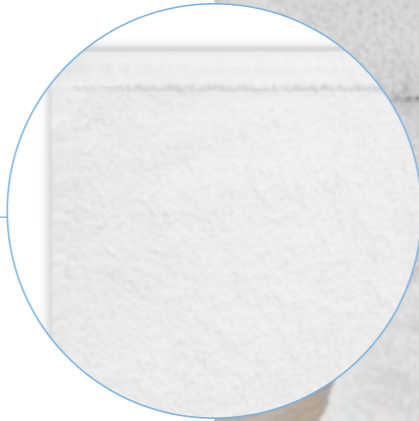
ONE

100% cotton
plain, 600 g/m²



Beverly

**80% cotton,
20% polyester**
plain, 500 g/m²



*extra
fluffy!*

*extra
fluffy!*



Dubai
100% cotton
woven border,
550 g/m²



Monaco
100% cotton
plain, with
american hem, 550 g/m²



Tokio
**90% cotton,
10% polyester**
plain, with
american hem, 420 g/m²

Bath mats

twisted terry, white

Dublin

100% cotton
single picture frame,
600 g/m²



ONE

100% cotton
single picture frame,
750 g/m²



Bali

100% cotton
double picture frame,
860 g/m²



Kyoto

**80% cotton,
20% polyester**
single picture frame,
600 g/m²



Bath mats

100% Bio-Fairtrade-cotton
twisted terry, white
single picture frame



Risos Fair
750 g/m²

Sasso Fair
800 g/m²





Bath robes

Shawl collar, two pockets,
loose belt, white



Astoria
100 % cotton
single-ply terry,
400 g/m²



Cannes
100 % cotton
velours,
420 g/m²



Luxor
60 % polyester,
40 % cotton
microfibre velour outside,
cotton inside, 320 g/m²



Table linen

- Twisted Yarns** > Manufactured from durable full-twist yarns
- Round Fit** > Specially produced, ironing direction marked
- Combed Cotton** > Combed quality yarns
- Mercerized** > Increased gloss
- Closed Selvedge** > Efficient ironing results by using closed selvedges

100 % cotton

full twist, mercerized,
white

Valencia
atlas edge,
205 g/m²



Wien
plain, 220 g/m²



100 % Bio-Fairtrade- cotton

full twist, mercerized,
white, 205 g/m²



Valencia fair
atlas edge



